

Confined Space Inventory for Saint Cloud Public Schools



Inspector: Rachel Koehler

Inspection Date: 1/22/2007

Building: North Junior High

Location: Tunnel A156

Type of Space: Sump

Space Classification: Permit

Potential Hazards:

Potential for oxygen deficiency

Engulfment

Number of Entries into Space: 1

Other Considerations:

Biological

City sewer or water

Slick/wet surfaces

Comments: Lockout/Tagout procedures for pumps are required prior to entry.

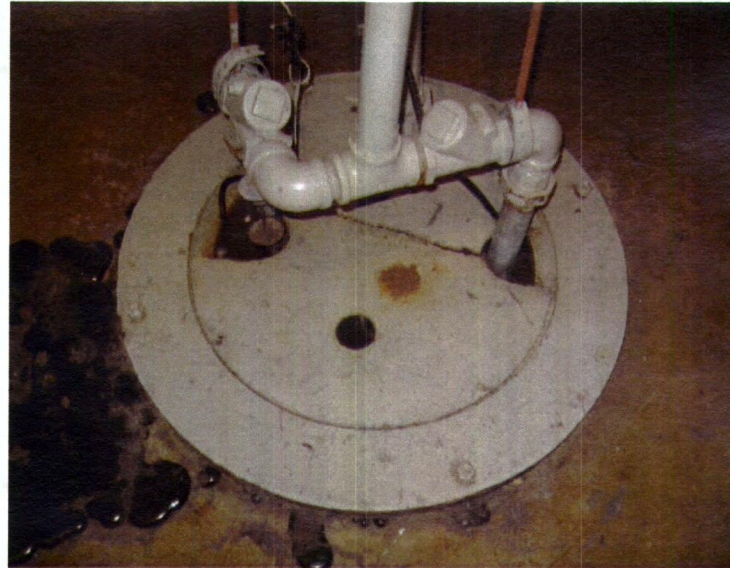


Photo Date: 1/22/2007

Photo Description

Sump

Confined Space Inventory for Saint Cloud Public Schools



Inspector: Rachel Koehler

Inspection Date: 1/22/2007

Building: North Junior High

Location: Gym G103 Behind Bleachers

Type of Space: Tunnel

Space Classification: Non-Permit

Potential Hazards:

No Hazards

Number of Entries into Space: 1

Other Considerations:

City sewer or water

Electrical

Poor lighting

Comments: Bleachers must be opened to access hatch.

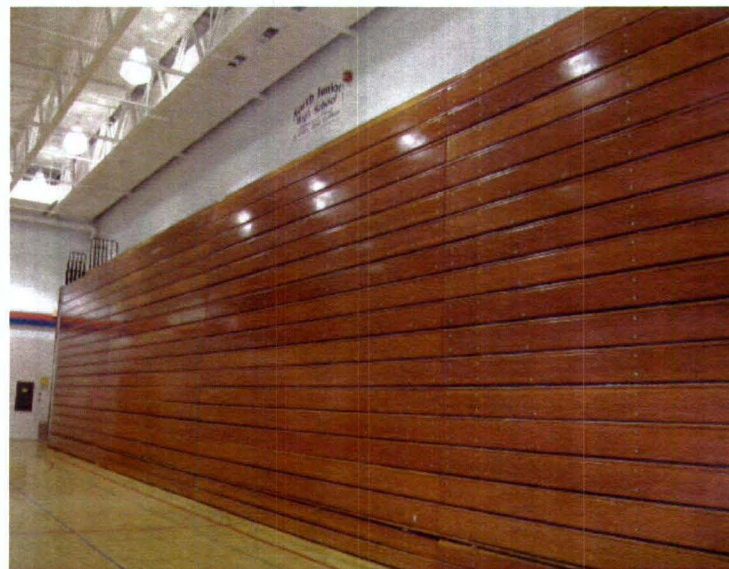


Photo Date: 1/22/2007

Photo Description

Tunnel access behind bleachers.

Confined Space Inventory for Saint Cloud Public Schools



Inspector: Rachel Koehler

Inspection Date: 1/22/2007

Building: North Junior High

Location: Boiler Room

Type of Space: Tunnel

Space Classification: Non-Permit

Potential Hazards:

No Hazards

Number of Entries into Space: 4

Other Considerations:

City sewer or water

Electrical

Poor lighting

Steam pipes

Asbestos

Comments: Tunnel travels throughout building.

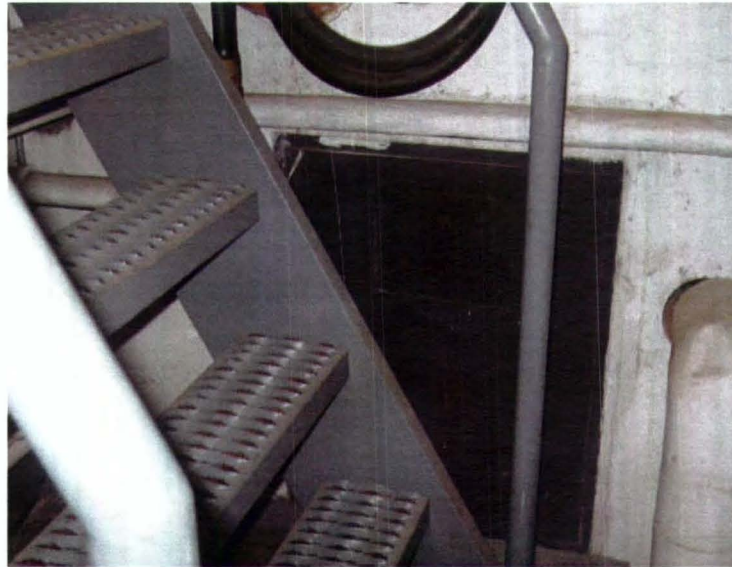


Photo Date: 1/22/2007

Photo Description

Tunnel access in Boiler Room.

Confined Space Inventory for Saint Cloud Public Schools



Inspector: Rachel Koehler

Inspection Date: 1/22/2007

Building: North Junior High

Location: Boiler Room

Type of Space: Tunnel

Space Classification: Non-Permit

Potential Hazards:

No Hazards

Number of Entries into Space: 1

Other Considerations:

Asbestos

City sewer or water

Electrical

Poor lighting

Comments: Tunnel travels around pool.



Photo Date: 1/22/2007

Photo Description

Tunnel access in Boiler Room.

Confined Space Inventory for Saint Cloud Public Schools



Inspector: Rachel Koehler

Inspection Date: 1/22/2007

Building: North Junior High

Location: Exterior Building North side

Type of Space: Storm sewer

Space Classification: Permit

Potential Hazards:

Potential for oxygen deficiency

Engulfment

Configuration

Number of Entries into Space: 1

Other Considerations:

City sewer or water

Fall hazards

Poor lighting

Slick/wet surfaces

Comments: None

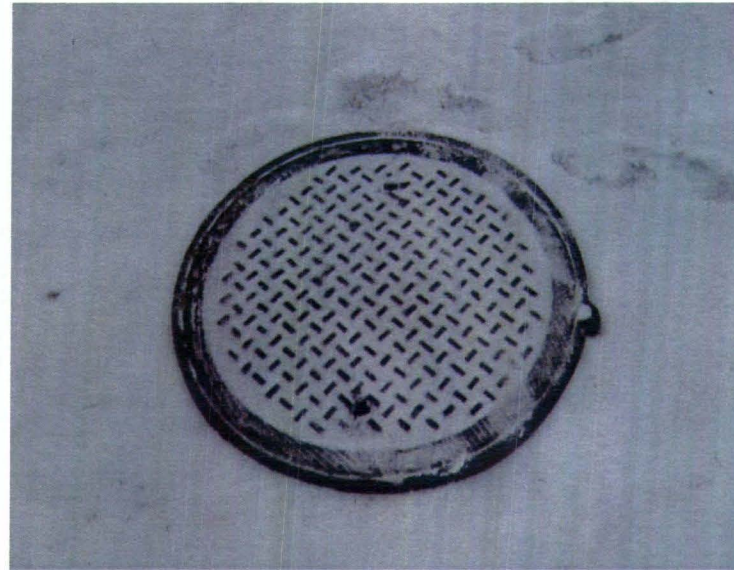


Photo Date: 1/22/2007

Photo Description

Manhole

Confined Space Inventory for Saint Cloud Public Schools



Inspector: Rachel Koehler

Inspection Date: 1/22/2007

Building: North Junior High

Location: Music/Pool Elevator

Type of Space: Elevator shaft

Space Classification: Non-Permit

Potential Hazards:

No Hazards

Number of Entries into Space: 1

Other Considerations:

Electrical

Fall hazards

Falling objects

Comments: Lockout/Tagout procedures for elevator are required prior to entry.



Photo Date: 1/22/2007

Photo Description

Elevator

Confined Space Inventory for Saint Cloud Public Schools



Inspector: Rachel Koehler

Inspection Date: 1/22/2007

Building: North Junior High

Location: Academics Elevator

Type of Space: Elevator shaft

Space Classification: Non-Permit

Potential Hazards:

No Hazards

Number of Entries into Space: 1

Other Considerations:

Electrical

Fall hazards

Falling objects

Comments: Lockout/Tagout procedures for elevator are required prior to entry.



Photo Date: 1/22/2007

Photo Description

Elevator